

November 7, 2007

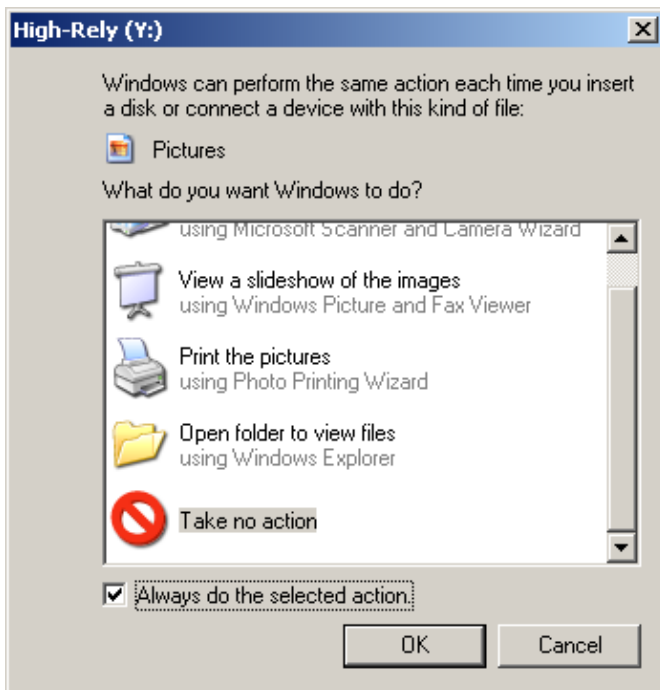
RE: Turning off Auto-Play.

By Darren McBride, updated by Thomas Hoops



Summary: The Auto-play feature in MS Windows can be very annoying or disrupting to backup functions when using removable drive media like that in a High-Rely system. This document explains how to configure the Auto-Play feature in Windows so that you can disable it entirely or selectively.

The message below can be a real nuisance every time you change your backup media.



We recommend that for each backup drive AND media type that you turn off autoplay.

Permanently Turning off AutoPlay

To avoid these dialogs permanently, you can try one of three different techniques

Technique #1: Use the following steps:

1. Open the My Computer icon.

2. Under Devices with Removable Storage, right-click the drive letter for the drive that you are using, and select Properties.
3. On the Autoplay tab, select the Mixed Content type.
4. Choose "Select an Action to Perform" button.
5. Select Take No Action. Do this again for music, picture, and video files.
6. Select Apply after all settings are made and then OK. Repeat on the remaining drives. Please note that this procedure might not work in all cases. This issue is caused by a file type association that is set by the Windows XP operating system.

Technique #2: The above instructions obviously require a lot of work. We have been told that Microsoft's "tweakui" for XP has an option to easily turn off autoplay for removable drives. Use TweakUI to navigate to my computer>autoplay>types. TweakUI is part of PowerToys for Windows XP. As of this writing a download link can be found here:

<http://www.microsoft.com/windowsxp/downloads/powertoys/xppowertoys.msp>

Technique #3: If you don't want to load TweakUI, another possibility for turning off the autoplay feature is to use the registry editor. Run either of the Registry Editors (REGEDIT.EXE or Regedt32.exe). One of the relevant entries you can change is:

HKEY_CURRENT_USER\Software\Microsoft\Windows\CurrentVersion\Policies\Explorer
To turn off the feature set the variable NoDriveTypeAutoRun to a Data Value of: dword: 0x000000FF

This disables the Autoplay feature on all drives of the type specified.

You may want some more Information on this Registry setting so here it is. The FF value we recommended above is actually a bitmapped value. The way it works is that to disable Autoplay on a particular type of drive, you set the bit representing that drive type to 1. To disable more than one type of drive, set the bits representing each type to 1, or sum the hexadecimal values of the representative bits.

Value	Disables Autoplay On
0x1	Drives of unknown type.
0x4	Removable Drives.
*0x8	Fixed (just hard drives) Drives.
0x10	Network drives.
0x20	CD-ROM drives.
0x40	RAM disks.
0x80	Drives of unknown type.
**0xFF	Drives of all types.

** Most recommended setting.

*Recommended setting.

By default, Autoplay is disabled on removable drives, such as the floppy disk drive (but not the CD-ROM drive), and on network drives. The default value 0x95 (149) is the sum of 0x1, 0x81 (unknown types), 0x4 (floppy drives), and 0x10 (network drives).

Note: Autoplay is triggered by a Media Change Notification (MCN) message from a monitoring service or from the CD-ROM driver. If the Windows interface does not receive this message, Autoplay does not operate, regardless of the value of this entry. Entries that suppress the MCN message, such as Autorun and AutoRunAlwaysDisable also disable Autoplay. Autoplay is also disabled on any drive if it is

disabled by the value of NoDriveAutoRun (in HKLM or HKCU) or NoDriveTypeAutoRun (in HKLM or HKCU). However, if NoDriveAutoRun or NoDriveTypeAutoRun appear in HKEY_LOCAL_MACHINE, their corresponding entries in HKEY_CURRENT_USER are ignored.

Related Registry entries: Autorun, AutoRunAlwaysDisable, NoDriveAutoRun (in HKLM), NoDriveAutoRun (in HKCU), NoDriveTypeAutoRun (in HKCU)

Note: With this solution, Windows will no longer be notified when you insert a new CD or DVD. To make sure the correct icon and title for the current DVD are displayed in My Computer and Explorer, press F5 to refresh the window.

Technique # 4: Highly-Reliable System's HRDM2 drive letter management software which controls what drive letters get assigned to removable media and allows duplicity of those assignments will allow you to turn off auto-play through selection during its installation. The HRDM2 utility programs comes on the HR Resources Disk which ships with all HR products.